

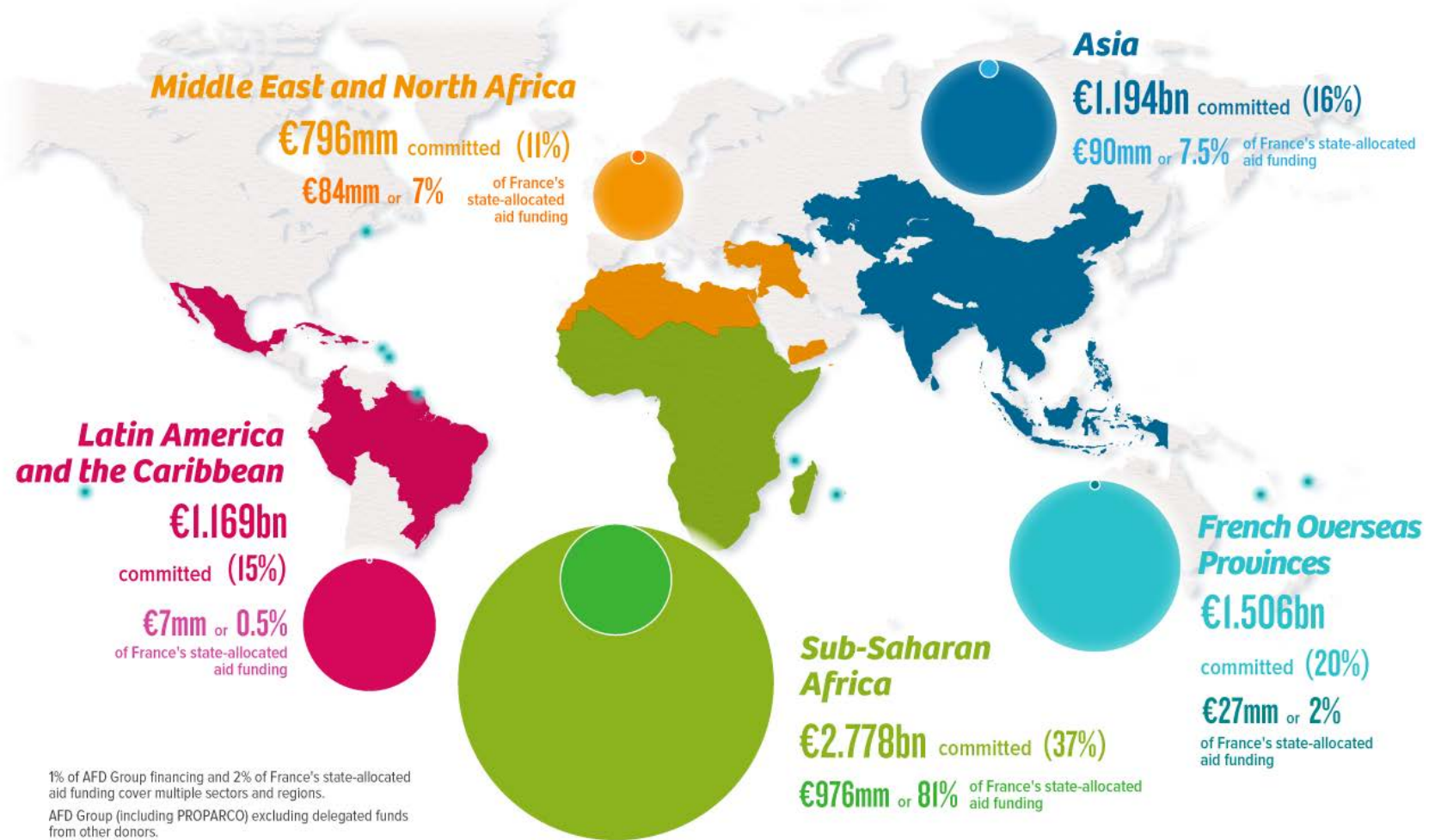


AFD Strategy in Mediterranean forest sector

Mediterranean Forest Week
17-20 March 2015
Barcelona, Spain

Shaping sustainable futures

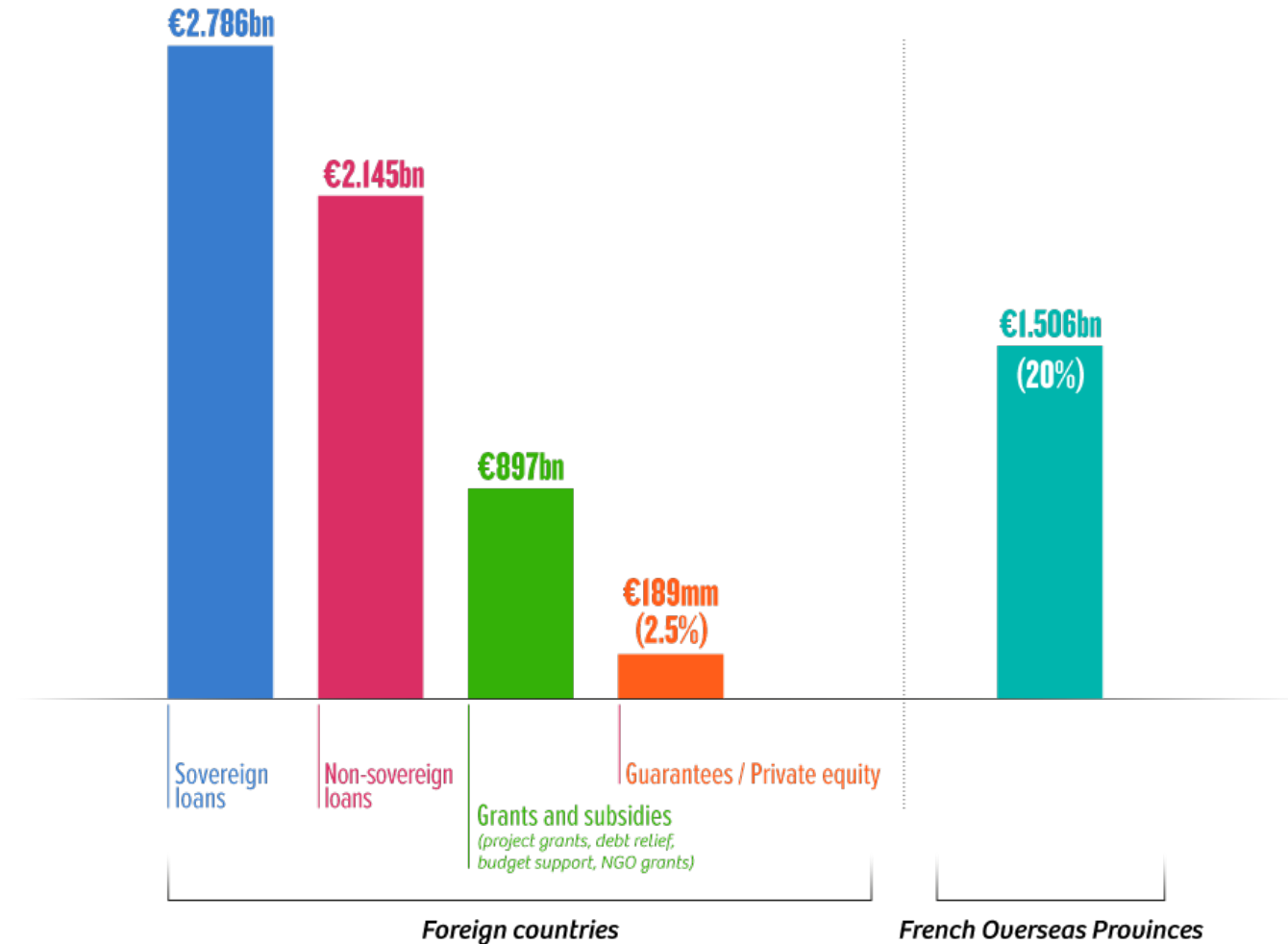
€7.8 billion for development: *Priorities by region*



1% of AFD Group financing and 2% of France's state-allocated aid funding cover multiple sectors and regions.
AFD Group (including PROPARCO) excluding delegated funds from other donors.
mm = million bn = billion

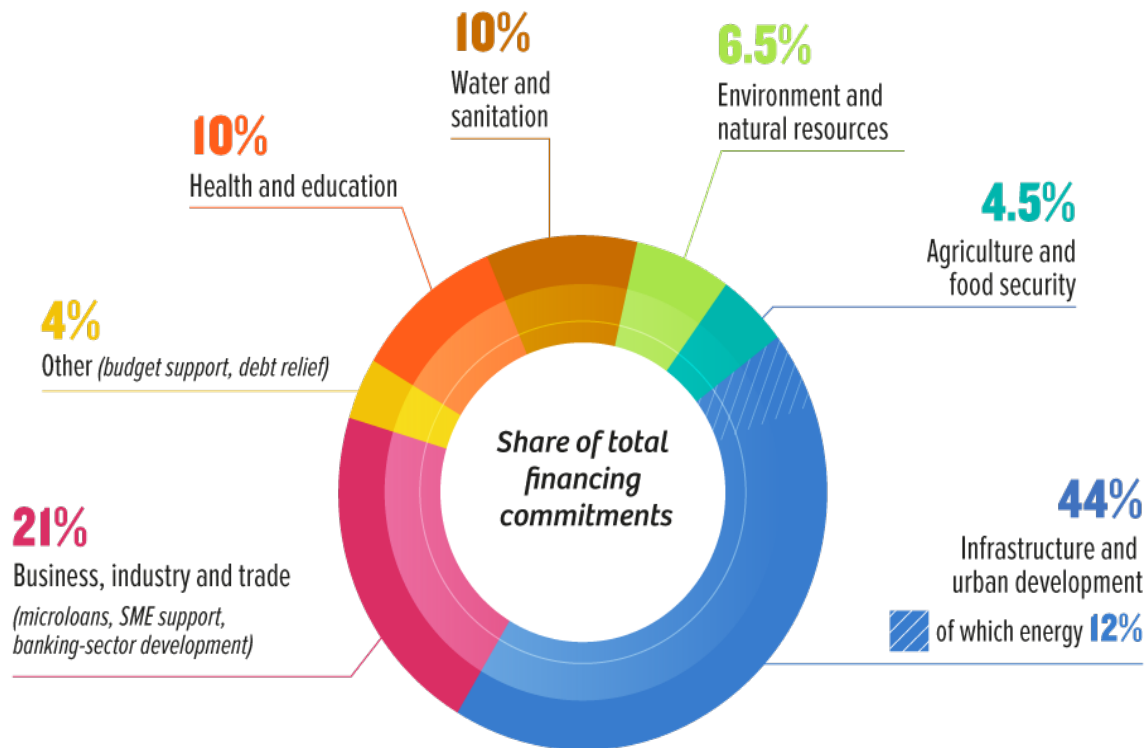
€7.8 billion for development:

A range of financing instruments adapted to beneficiaries' needs



AFD Group including PROPARCO; excluding delegated funds from other donors
bn = billion mm = million

€7.8 billion for development: *Centered on the three dimensions of sustainable development*



AFD Group including PROPARCO; excluding delegated funds from other donors

AFD's Strategy in Forestry sector

■ **General objective :**

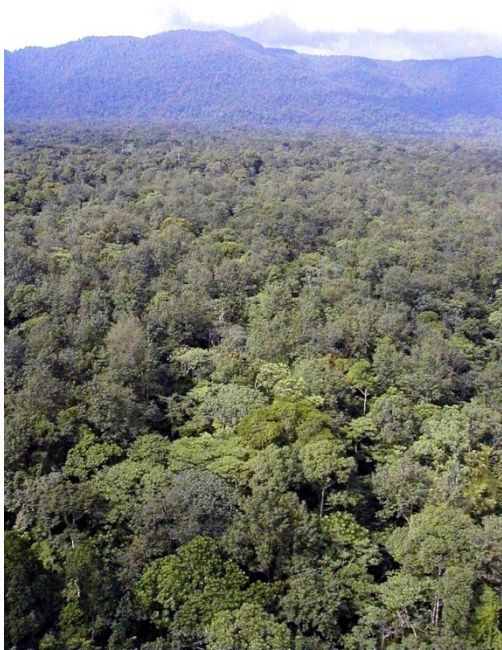
- Promotion of sustainable management of protected and logged forests that reconcile environment protection with economic benefits (that bring together forest-dwelling populations as well as the private sector and NGOs).

■ **Operational objectives:**

- **Consolidate and extend achievements regarding forest management** through: i) improvement of forestry governance ii) extension of certified sustainable forest concessions iii) adapting and testing this model in other countries iv) diversification of activities in “non-tropical” forests countries (Sahel & Mediterranean regions).
- **Add more value to forest** : in order to improve competitiveness of sawn timber and fuel wood to increase their contribution to economic development and job supply.
- **Strengthen interactions between climate, forest and biodiversity:** to give AFD more legitimacy to its forestry activities and to mobilize innovative financing mechanisms.

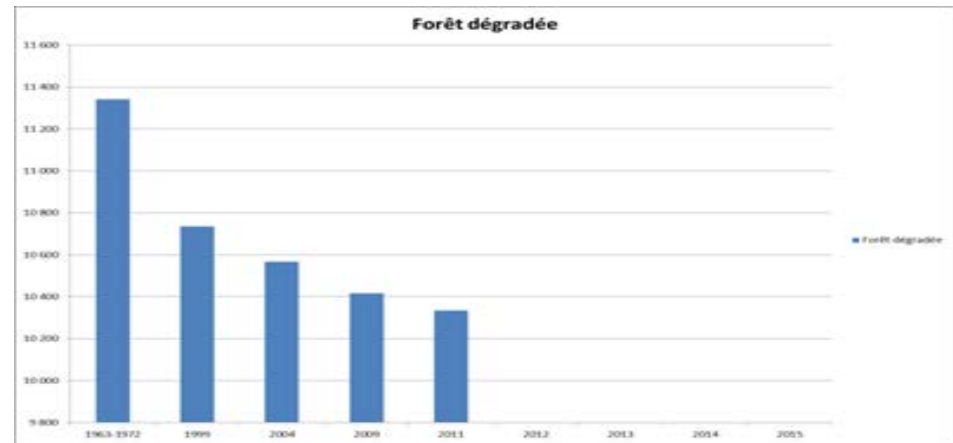
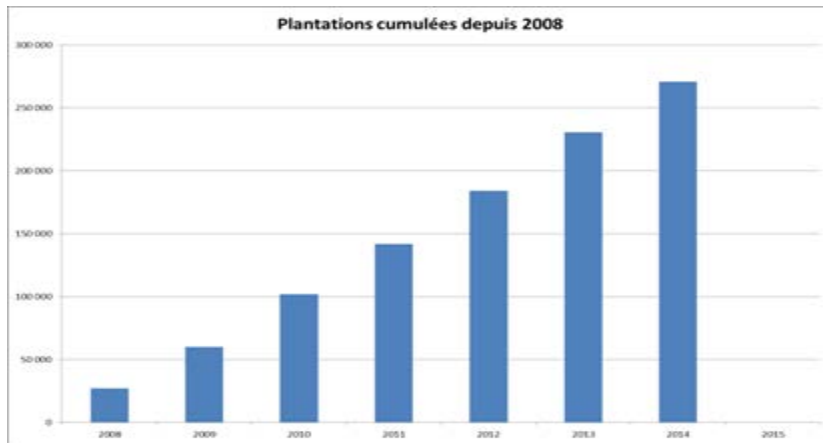
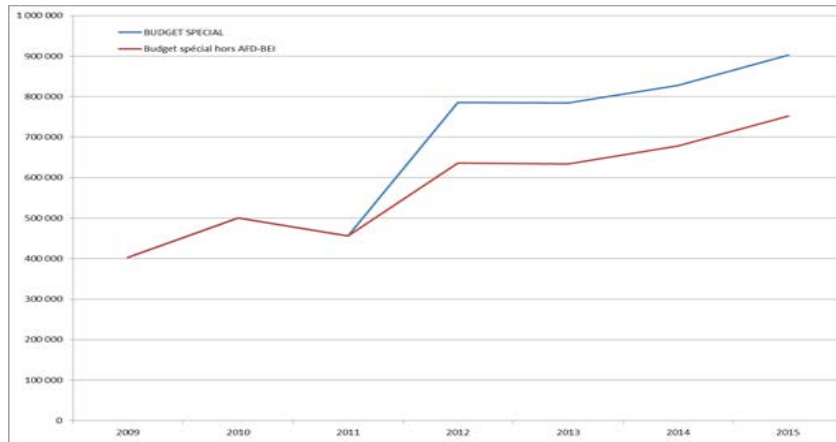


AFD's Forestry Operational Area



- **Sub-Saharan Africa:** Congo basin remains the main area of intervention for AFD.
- **Mediterranean area:** Mediterranean basin is identified as one climate change hot spot. In this context, Mediterranean forests is a key issue:
 - economic value and contribution to national economies – conservation & sustainable management - adaptation policy to climate change.
- **Emerging countries, possibility of:**
 - adapting long experience of sustainable forestry management in Congo basin can be explored,
 - developing, on a case-by-case basis, climate change programme loan integrating a forest based approach (Mexico or Indonesia),
 - Support REDD+ initiatives and integrated approaches to watershed management.

Cooperation with Turkey (1)





Cooperation with Turkey (2)

- Du point de vue forestier :
 - Maîtrise d'ouvrage performante (OGM)
 - Partenariat d'accompagnement technique (ONF-OGM), adossé à une subvention d'accompagnement de 400.000€

- Du point de vue d'une banque de développement :
 - Montants importants (2x150 M€)
 - Rapidité d'instruction (matrice d'indicateurs de suivi)
 - Financements parallèle avec la BEI

- Du point de vue politique :
 - Financements comptabilisés Climat (à 100%) et Biodiversité (à 80%)
 - Coopération articulée avec les objectifs de la COP21
 - Dialogue entre la Turquie et la France soulignant que la Méditerranée est une zone prioritaire



Cooperation with Lebanon (1)

- Restauration d'un continuum (corridor des cèdres) et la réduction de la fragmentation des massifs pour retrouver une masse critique des écosystèmes et une capacité de résilience socio-économique ;
- Augmentation de la diversification des espèces forestières à la fois à des fins de biodiversité mais également d'augmentation des opportunités économiques ;
- Restauration de massifs forestiers plus diffus avec une résilience aux changements climatiques et une capacité à générer des revenus économiques ;
- Reforestation de zones fortement dégradées ;
- Gestion des forêts naturelles.



Cooperation with Lebanon (2)

■ Appui à la politique forestière au niveau national et local

- Renforcement des compétences des services en charge de la forêt
- Renforcement des liens avec la recherche universitaire, la vulgarisation et le secteur privé
- Appui à la définition et à la mise en œuvre au niveau local des schémas d'aménagement forestiers et de développement rural
- Renforcement des compétences des acteurs locaux (collectivités, ONGs, exploitants)
- Restauration d'espaces forestiers
- Renforcement des moyens de préservation de la forêt (réservoirs de lutte contre l'incendie, moyens de régulation de la pression pastorale et de coupe pour le bois de chauffe etc.)

■ Appui au développement local des régions

- Appui au développement d'activités agricoles dans le cadre de plans de développement des collectivités
- Création de retenues collinaires, pistes rurales, plantations, investissements économiques communaux.

Cooperation with Morocco

- Sustainable management of Ifrane forest ;
- Support to local communities ;
- Environmental and biodiversity protection.





Cooperation with Tunisia

Développement intégré et durable de territoires ruraux socialement et écologiquement sensibles :

- Planification concertée de la gestion des ressources naturelles : élaboration plans de gestion des ressources naturelles et de développement agricole
- Mise en œuvre de ces plans



Regional approach

■ Technical issues

- Woodland grazing
- Fire protection
- Forest restoration

■ Intervention strategy

- Landscape approach

■ Research objectives

- Genetic conservation
- Plant-health risk

■ Global issues

- Climate
- Biodiversity
- Soil protection

Main Features of AFD Forestry Expertise

- **A long standing involvement in tropical forestry since the beginning of 90's**
 - A sustainable model of forestry management in forestry concessions, including those of medium and small size, and support to certification (FSC)
 - Local development in forest areas (land use planning, capacity building in management for local communities).
- **Integrated approach of watershed management combined with conservation agriculture**
 - Ridge to river to reef approach
 - Development of sustainable income generating activities from all available biodiversity resources (bush meat, NFTP...)
- **Know-how in forestry engineering and carbon accounting**
 - Support to national action plans on climate change whose results regarding reduction of deforestation will make it possible for some countries to benefit from the carbon financings mechanism REDD+.
 - Development of National Forest Inventories (NFI) based on a sampling method (e.g. French NFI – TERUTI-LUCA) in order to estimate, with the accuracy required by IPCC, the pools and GHG sources for the activities considered.
 - French know-how in tropical forest engineering (CIRAD, FRM, ONF, TERE, OREADE-BRECHE.), with suppliers of advanced imagery technology (ASTRIUM/SPOT Image, IRD, IGN.)...



Thank you for your attention

Shaping sustainable futures